

**PUBLIC WORKS DEPARTMENT**  
**City of Brush Snow Management Plan**  
**Winter Snow Removal Plan**

The City of Brush recognizes the importance of snow removal, not only to residents, but to everyone who needs to travel to or through our community. We use a “Snow Management Plan” to safely clear all Public Roads within the City quickly and efficiently. Based on traffic flow, roads are divided into primary (main), secondary (collector and through), and tertiary (dead-end and cul-de-sac) roads.

**Priority Areas (Exhibit A)**

Business Districts  
School and Hospital Zones  
All Primary Roads (thoroughfares)

Our Goal is to have all City roads clear as soon as possible **after** snow has STOPPED FALLING. This Plan, with your cooperation, will ensure the best use of time, City resources, equipment and crews during snow removal and emergencies.

When a Snow Event has been declared in accordance with the Brush Municipal Code (**Exhibit B**), the City activates Emergency Operations at the City Building. The Center is staffed by City employees who are in contact with all snow removal crews. If you have an emergency during a Snow Event and need immediate assistance please dial 911.

When a Snow Event has been declared all vehicles shall be removed from designated and posted Snow Routes (see picture at right) Vehicles not moved may be towed at the owner’s expense.



**Snow Event Announcements**

The Director of Public Works will declare a Snow Event upon receipt of measurable snow accumulation or when severe weather is forecast from the National Weather Service. Upon declaration the Director will notify the Police Department, the County Communications Center and local radio stations B106 FM, KSIR 106 AM and KFTM 1400 AM. The Communications Center will issue an Emergency bulletin to be broadcast on Channel 10 Cable TV.

|                       |          |
|-----------------------|----------|
| Communications Center | 867-8531 |
| KSIR                  | 867-7271 |
| KFTM                  | 867-5674 |

**Plowing/Sanding**

The first priority is to clear all primary (main) roads, including school bus routes.

Crews begin plowing secondary roads after clearing and opening all primary roads. Crews then move on to side roads, dead-ends and cul-de-sacs.

Crews begin sanding or plowing as soon as snow begins to accumulate.

Crews often make multiple passes on primary roads. These primary roads are the most heavily traveled roads in the City and must be cleared and opened first to allow for the passage of emergency and general traffic. Plowing primary roads may have to continue until after the snow stops falling.

The City's secondary roads and side streets are plowed as quickly and efficiently as possible. Crews rotate the starting point after each new storm to ensure that all areas receive equal treatment during the snow removal season.

Crews attempt to clear all streets to the curb-line during snow removal. This may not be possible where vehicles remain parked on the streets. Ice buildup in the gutters are a direct result of vehicles remaining parked along the streets where crews cannot plow.

During and following a Snow Event, snow is piled into the middle of the street until loaders and dump trucks become available to carry it off to an offsite location.

### **Snow and Ice Removal Protocol by City Crews**

In addition to the streets previously mentioned the Public Works crew removes snow from around the shop, City Hall, ambulance barn and firehall, the walking path along Mill Street to Beaver Valley School and Sunset pond. Snowfall during the night will necessitate sanding or snow removal efforts before school and business hours.

The Parks and Cemetery is responsible for removing snow around Sunset ballfields (both sides of Emerson) along Pioneer Park, in front of the south cemetery, cemetery parking in the north cemetery and around Doty pond.

Significant snowfall or a lack of available personnel will initiate contact from the Director of Public Works to the Recreation Director for assistance from the parks and cemetery crew. To minimize overtime hours and to fully utilize all available personnel, the Public Works Director shall coordinate with the Parks and Recreation Department whenever possible for both snow and ice removal throughout the City. In extreme conditions personnel from various departments may be utilized, including utilities and trash.

### **Citizen Snow Removal Requirements**

- Sidewalks must be cleared of snow within 24 hours of any snowfall. (Brush Municipal Code Sec. 11-1-60).
- Throwing, shoveling or plowing snow from sidewalks or driveways into the street after the City crews have passed by is strictly prohibited
- Commercial Parking Lots - Dumping snow or ice onto City property or streets, or plowing snow across a street is strictly prohibited.
- AGAIN, vehicles need to be parked off the streets to allow City crews to remove the snow and ice from the gutters.

## **EXHIBIT B**

### **BRUSH MUNICIPAL CODE**

#### **ARTICLE 3**

##### **Snow Event**

###### **Sec. 11-3-10. Snow event declared.**

Whenever the Director of Public Works (hereinafter "Director") finds and so determines that due to falling snow, sleet, freezing rain or a forecast by the National Weather Service of weather conditions that so warrant, the Director is hereby authorized to declare the existence of a snow event. (Prior code §21-13)

###### **Sec. 11-3-20. Notice.**

The Director shall provide announcements to local radio stations, the Morgan County Communications Center, and the Police Department declaring a snow event to exist and describing the action to be taken by the City. There shall be included in such announcement the time that any parking prohibitions are to become effective. When feasible, such announcement shall be disseminated to a newspaper having general circulation within the City. The Morgan County Communications Center shall implement an Emergency Alert System (EAS) bulletin through the cable television network informing City residents of the snow event declaration. (Prior code §21-14)

###### **Sec. 11-3-30. Snow routes.**

Upon the declaration of the existence of a snow event, parking of motor vehicles shall be prohibited on all streets designated as "Snow Routes." For the purposes of this Article, snow routes shall consist of those streets or portions of streets within the City as determined by the Public Works Director. On each street or portion of street which is designated as a snow route, the Director shall post, at reasonable intervals, special traffic signs indicating by the appropriate symbol or wording that such street or portion of such street has been designated as a snow route. (Prior code §21-15)

###### **Sec. 11-3-40. Authority to tow vehicles.**

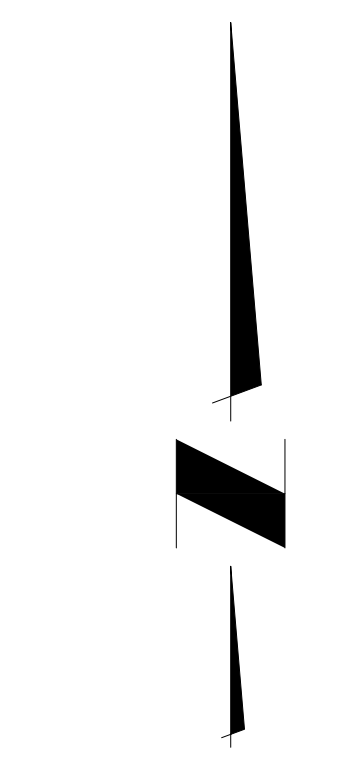
Whenever any vehicle, except an emergency vehicle, is found standing, attended or unattended upon a snow route in violation of the snow event parking prohibition, the Director shall, without delay and at the owner's expense, take action to have the vehicle towed or otherwise removed from the snow route. (Prior code §21-16)

###### **Sec. 11-3-50. Termination of snow event.**

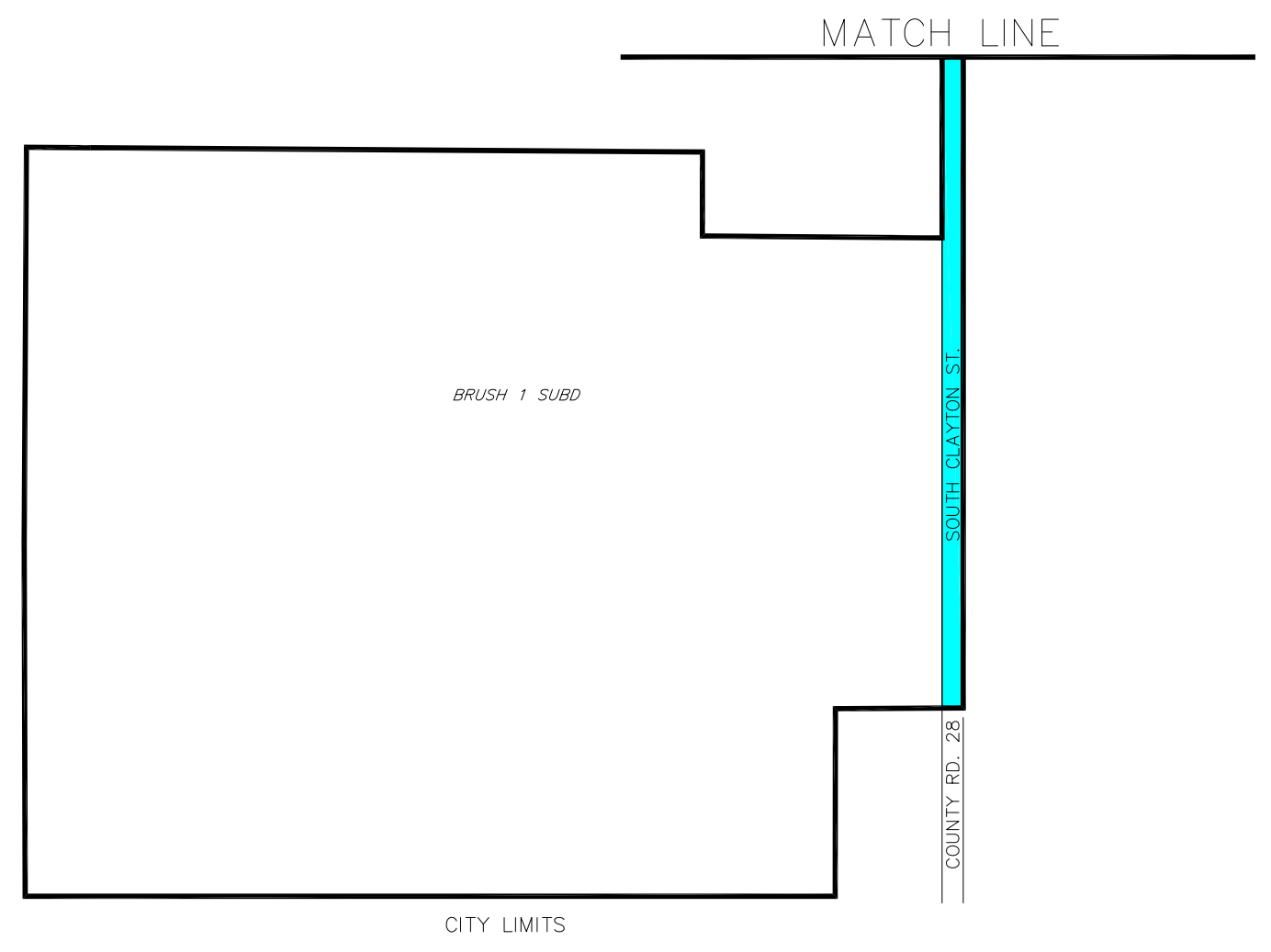
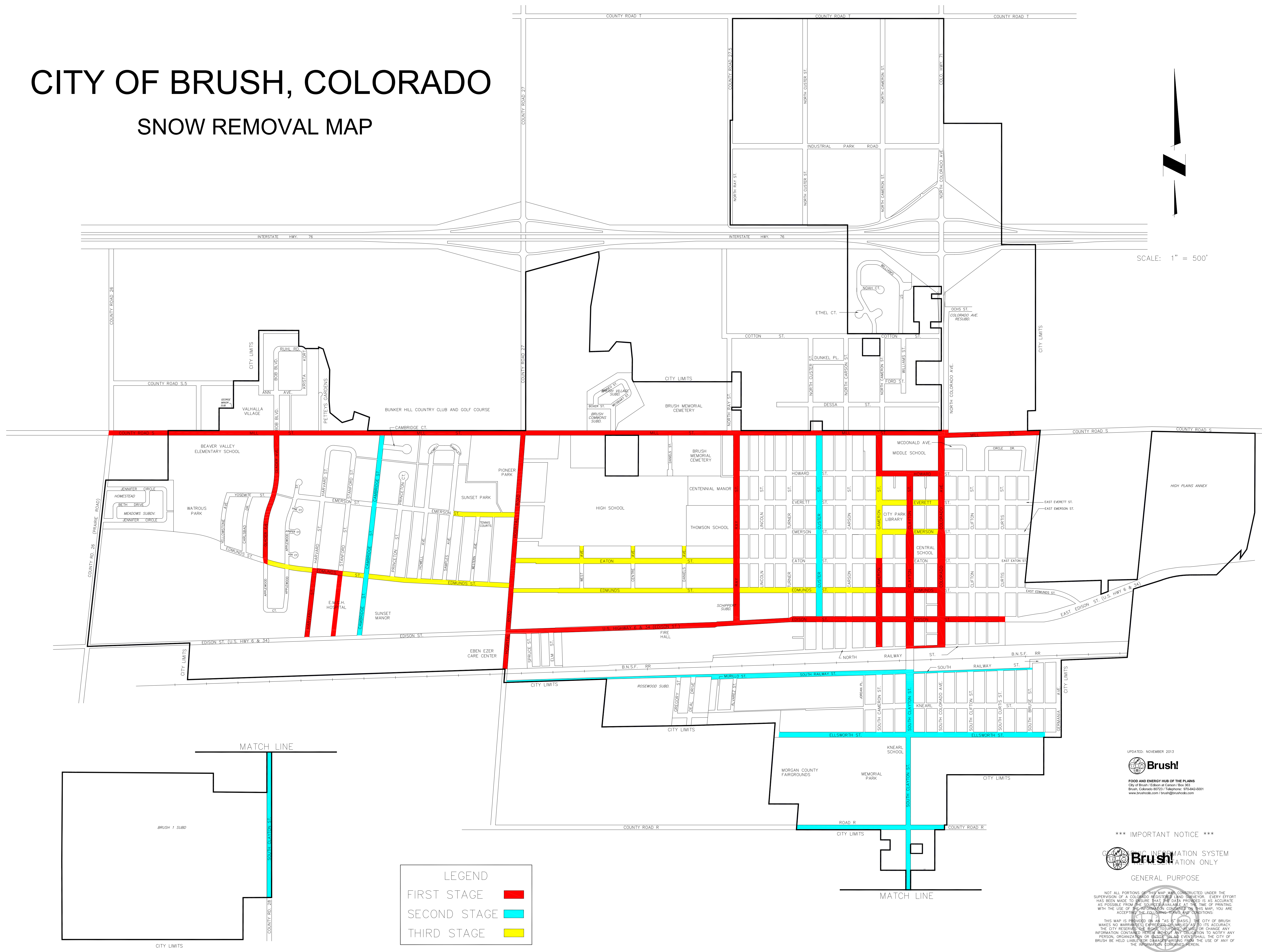
Whenever the Director finds that some or all of the conditions which gave rise to the snow event no longer exist, the Director may declare the termination of the snow event in part or in whole, effective immediately upon announcement. Upon declaring the termination of the snow event, the Director shall notify the Police Department, the local radio stations and the Morgan County Communications Center. The Communications Center shall broadcast an EAS bulletin notifying residents of the termination of the snow event. In the absence of any such announcement, whenever the entire roadway of any snow route is substantially clear of snow from curb to curb, the snow event shall be deemed to be terminated on the cleared snow route and the normally permitted parking of vehicles shall thereupon be automatically authorized. (Prior code §21-17)

# CITY OF BRUSH, COLORADO

## SNOW REMOVAL MAP



SCALE: 1" = 500'



| LEGEND       |                                       |
|--------------|---------------------------------------|
| FIRST STAGE  | <span style="color: red;">█</span>    |
| SECOND STAGE | <span style="color: cyan;">█</span>   |
| THIRD STAGE  | <span style="color: yellow;">█</span> |

UPDATED: NOVEMBER 2013  
**Brush!**  
 FOOD AND ENERGY HUB OF THE PLAINS  
 City of Brush / Edison at Canon / Box 363  
 Brush, Colorado 80723 Telephone: (970)462-6001  
 www.brushcolorado.com / brush@brushcolorado.com

\*\*\* IMPORTANT NOTICE \*\*\*  
 CITY OF BRUSH PUBLIC INFORMATION SYSTEM  
 INFORMATION ONLY  
 GENERAL PURPOSE

NOT ALL PORTIONS OF THIS MAP WERE CONSTRUCTED UNDER THE SUPERVISION OF A COLORADO REGISTERED LAND SURVEYOR. EVERY EFFORT HAS BEEN MADE TO BRUSH THAT THE DATA PROVIDED IS AS ACCURATE AS POSSIBLE FROM THE SOURCES AVAILABLE AT THE TIME OF PRINTING. AS POSSIBLE FROM THE SOURCES AVAILABLE AT THE TIME OF PRINTING. WITH THE USE OF THIS INFORMATION, YOU ACCEPT THE FOLLOWING TERMS AND CONDITIONS:  
 THIS MAP IS PROVIDED ON AN "AS IS" BASIS. THE CITY OF BRUSH MAKES NO WARRANTIES, EXPRESS OR IMPLIED, AS TO ITS ACCURACY. THE CITY RESERVES THE RIGHT TO UPDATE, REVISE OR CHANGE ANY INFORMATION CONTAINED HEREIN WITHOUT ANY OBLIGATION TO NOTIFY ANY PERSON, ORGANIZATION OR BUSINESS. CLAIMS OR DAMAGES OF ANY KIND SHALL BE HELD UNLAWFUL AND DENIED ARISING FROM THE USE OF ANY OF THE INFORMATION CONTAINED HEREIN.